

General Description

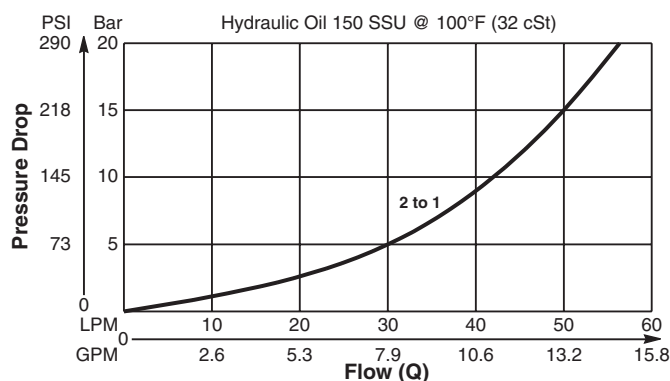
Spool Type, Normally Open, Vent to Close Logic Element. For additional information see Technical Tips on pages LE1-LE6.

Features

- High flow capacity
- Used as high flow switching or metering element
- Can be used as pressure regulator with mainstage controlled remotely by a pilot relief valve or a proportional valve
- Various switching pressures available
- 1:1 pilot ratio
- Hardened working parts for maximum durability
- All external parts zinc plated

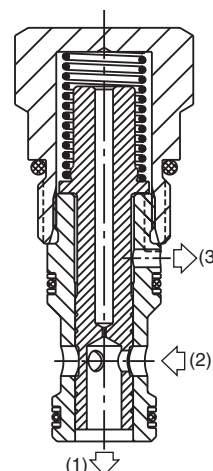
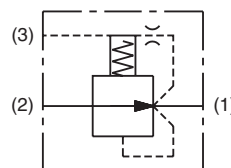
Performance Curve

Pressure Drop vs. Flow (Through cartridge only)



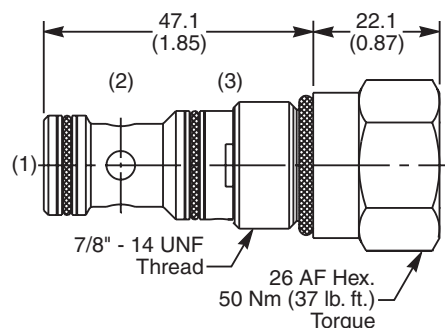
Specifications

| | |
|---------------------------------------|--|
| Rated Flow | 57 LPM (15 GPM) |
| Nominal Flow @ 7 Bar (100 PSI) | 35 LPM (9.2 GPM) |
| Maximum Inlet Pressure | 420 Bar (6000 PSI) |
| Leakage @ 150 SSU (32 cst) | 50 ml/min. @ 100 Bar (1450 PSI) |
| Switching Press. | See ordering information |
| Cartridge Material | All parts steel. All operating parts hardened steel. |
| Fluid Compatibility/ Viscosity | Mineral-based or synthetic with lubricating properties at viscosities of 45 to 2000 SSU (6 to 420 cSt) |
| Filtration | ISO-4406 18/16/13, SAE Class 4 |
| Approx. Weight | .14 kg (.31 lbs.) |
| Cavity | C10-3S (See BC Section for more details) |
| Form Tool | Rougher NFT10-3SR Finisher NFT10-3SF |



Dimensions

Millimeters (Inches)



Ordering Information

| | |
|-----------------------|----------|
| R04G3 | N |
| 10 Size Logic Element | Seals |

| Code | Switching Pressure Non Adjustable Preset |
|------|--|
| 5.0 | 5.0 Bar (73 PSI) Std. |
| 10.0 | 10.0 Bar (145 PSI) |
| 15.0 | 15.0 Bar (218 PSI) |

If no switching pressure is specified, valve will be supplied as R04G3-5.0N

| Code | Seals / Kit No. |
|------|-------------------------------|
| N | Nitrile Buna-N / (SK30504N-1) |

Fluorocarbon seal kits are available separately to convert external seals. If required, please order: (SK30504V-1)